

OPTIMUM LIGHT EFFICIENCY

Suitable for LED lights and halogen bulbs up to 50W

The hood for the lighting fixture is made from PPS, a high quality plastic resistant to high temperatures. This makes it easy to direct the light without burning your fingers. The aluminum fitting is provided with cooling blades for efficient heat dissipation.



ROCK SOLID TO CLICK IN

Special locks for extra security

Optimum lighting is guaranteed because a spring ensures a constant pressure on the contacts in the rail. Perfect fitting is guaranteed with double lock grooves in the adaptor, preventing accidental detachment, plus an additional ring and fastening screw.

SIMPLE TO POINT

Always beautifully lit

The power cable is protected by the integrated 'insulation sleeves'. These ensure that the cable bends and remains insulated when the lamp is pointed. Objects can be lit in any possible fashion without any problems.

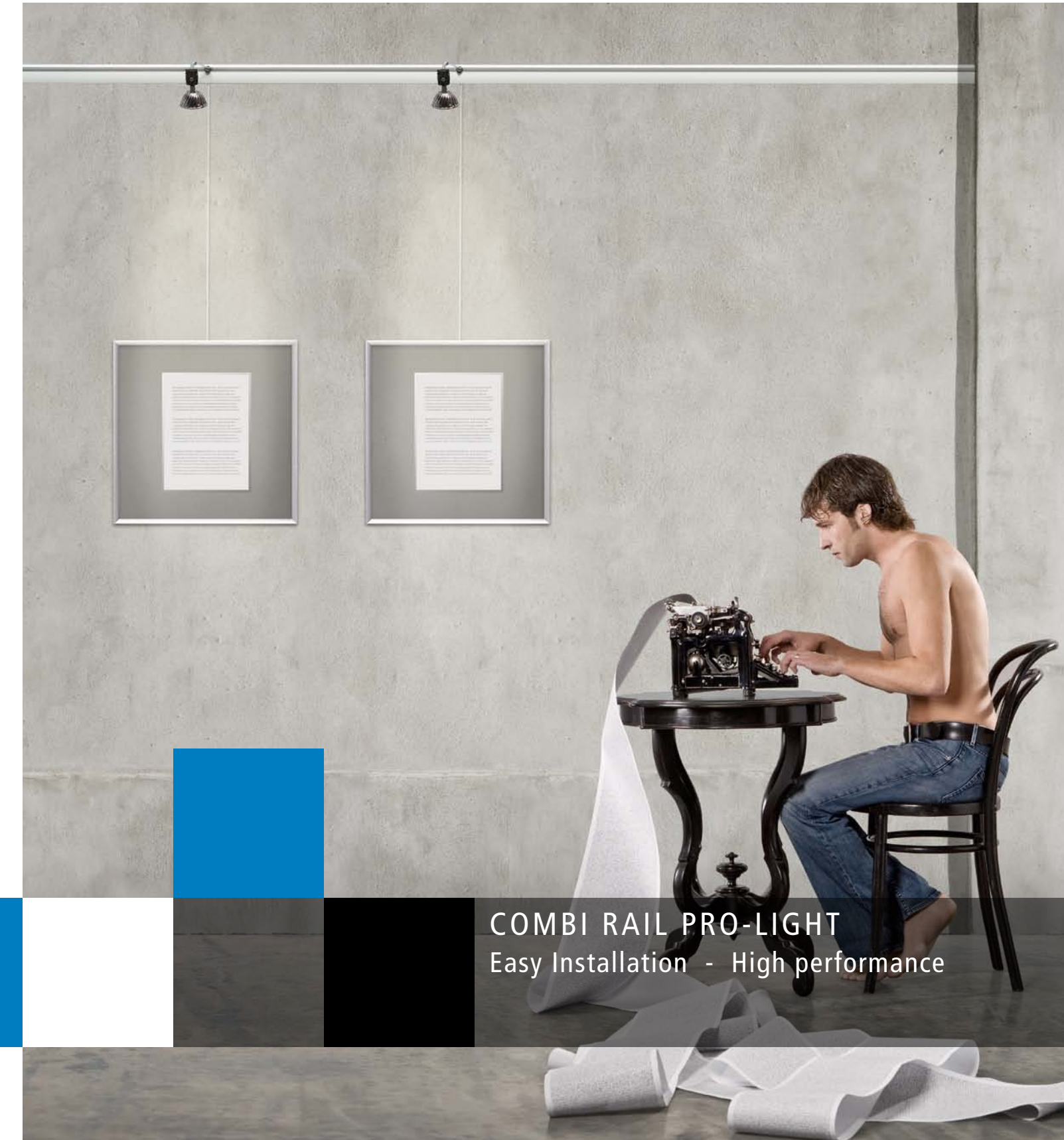
ARTI TEQ

HERA STRAAT 39
5047 TX TILBURG
THE NETHERLANDS
T +31 (0)13 572 90 70
F +31 (0)13 572 90 75
INFO@ARTITEQ.COM
WWW.ARTITEQ.COM

Combi Rail Pro-Light and Twister are patented and design registered products of Arti TeQ.



STATE OF THE ART HANGING SYSTEMS



COMBI RAIL PRO-LIGHT
Easy Installation - High performance



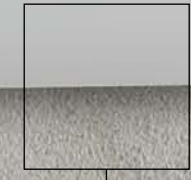
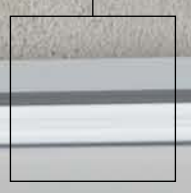
COMBI RAIL PRO-LIGHT:
12V, max. 300W - Trackload: max. 50kg/m, max. 20kg/point - SAA A/11960E.



STATE OF THE ART HANGING SYSTEMS



SEPARATE CONDUIT FOR CONDUCTIVE COMPONENTS



SEPARATE CONDUIT FOR HANGING SYSTEMS



LOAD CAPACITY UP TO 300W
MAXIMUM LOAD 50 KG/M

SUSPENSION WIRE

LED LIGHTING AND HALOGEN LIGHTING BOTH POSSIBLE

in 3 steps

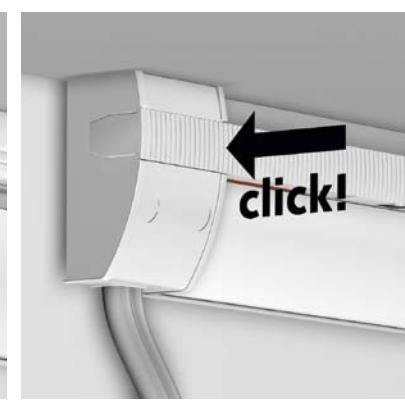
Combi Rail Pro-Light offers you the ultimate style of presentation. The rail itself is of a handsome, neutral design and fits therefore into any interior. In addition, the light makes it possible to illuminate objects in an effective and superior way thanks to its moveable, flexible fitting. Assembly and installation of the Combi Rail Pro-Light are extremely simple and can be carried out in three quick steps with no problems.

towards an optimum presentation



SCREWING THE 'CLICK & CONNECT' ATTACHMENT TO THE WALL

Advantage: no longer any problems with holding long rails in your hands because you first install convenient attachment points. The rail is in the correct position straight away.



ATTACHING THE POWER SUPPLY

Advantage: mounting without any screws or tools. Applicable both left and right.



POSITIONING THE LIGHT FITTINGS

Advantage: by turning the light fittings 90° in the rail they are quickly fixed in the desired position. One screw and adjusting knob guarantees you an optimum lighting scheme.



THE BEST COMBINATION OF HANGING PICTURES AND LIGHTING IN A SINGLE SYSTEM

You are looking for a perfect presentation on the wall. Arti TeQ offers you: the new Combi Rail Pro-Light. The system is mounted in a simple way and offers optimum safety in addition to very convenient operation and use. Attaching the rail and installing the power supply are quick and easy to do and require no special tools or techniques. All components have

been approved by well known independent testing institutes and are therefore absolutely safe. Once installed, the Combi Rail Pro-Light will always allow you to change presentations quickly and easily light them. The rail has a separate conduit for the hanging cables or hanging rods. This enables them to be relocated separately from the power carrying parts.