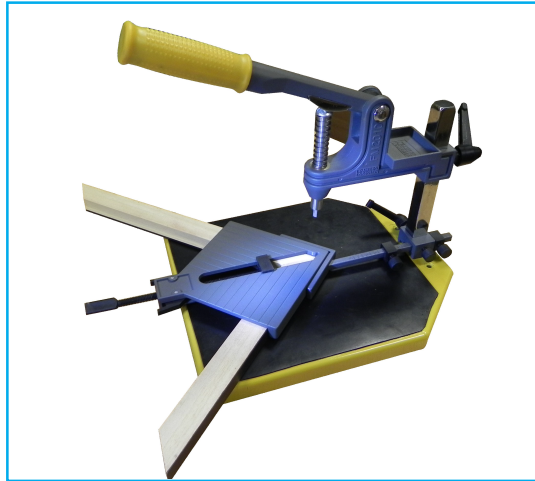


PFK04 Picture Framing Kit



Operating Instructions

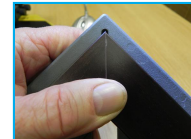
When you receive your PFK04 Picture Framing Kit

1. Remove all parts from the packaging
 2. Remove the screw holding part no. 26 Main Bracket on to part no. 11 Vertical Bar and replace with the adjustable Lever.
 3. Place the parts 28 to 31, spindle assembly together with the spring, part No 225, in to the Spindle Bush, Part No. 32, on the main bracket. Make sure that the 'tongue' of the spindle sits in the slot on the Pressure Bar, part no 24.
- The assembly is complete.



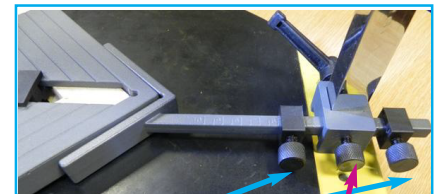
Clamping the moulding in the quick action clamp

1. The clamp is fitted with a quick action screw. Push both of the levers, part no. 3, towards the screw and the screw can be moved quickly backwards and forwards.
2. Place 1 long and 1 short pieces of moulding in the clamp, adjust until they fit together properly and tighten the screw to grip the moulding. Do not grip too tightly.
3. Check the top and bottom of the joint to make sure the mouldings are sitting tight together



Setting the Production Stops

1. After securing the moulding in the fence, turn the fence over so that the bottom of the joint is facing up.
2. Start with the front wedge position. Place the clamp against the fence, undo the centre lock and the 2 production stops and position the fence/clamp until the required wedge position is directly underneath the back edge of the square magnetic driver. Lock the front production stop against the fence casting.
- 3 Repeat the positioning for the back wedge position and lock the back production stop against the fence casting.
4. You are now able to move the fence and clamp forwards and backwards between the front and back production stops.

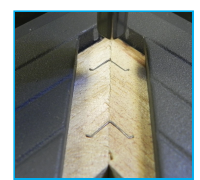
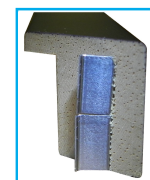
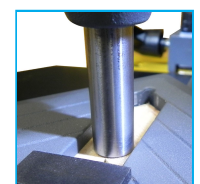
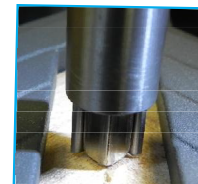


Production stops

Centre Lock

Making the frame

1. Set the height of the driver to around 20mm above the moulding .
2. Decide which height of wedge you will use, 7mm and 10mm are supplied with the kit. Place one against the back edge of the square magnetic driver with the sharp end downwards. Make sure that the top edge of the wedge sits against the underside of the spindle, part no. 34 to help keep the wedge upright.
2. Position the clamp/fence against one of the stops, it normally does not matter which you use first. Tighten the centre lock to hold the fence in position.
3. Slowly squeeze the wedge into the moulding, using the handle, and make sure the wedge is sitting central to the joint line.
4. If the moulding is high then you may insert a wedge on top of the first wedge. Make sure that the second wedge lines up with the first, if necessary move the fence slightly to achieve this and again squeeze the wedge into the moulding.
5. Undo the centre lock, move the fence/clamp to the other production stop and lock the centre lock.
6. Insert the wedges as required.
7. Repeat the process for the other corners, using the same production stop positions.



Maintenance

Keep your PFK04 clean, do not let dust accumulate in the clamp or around the magnetic driver

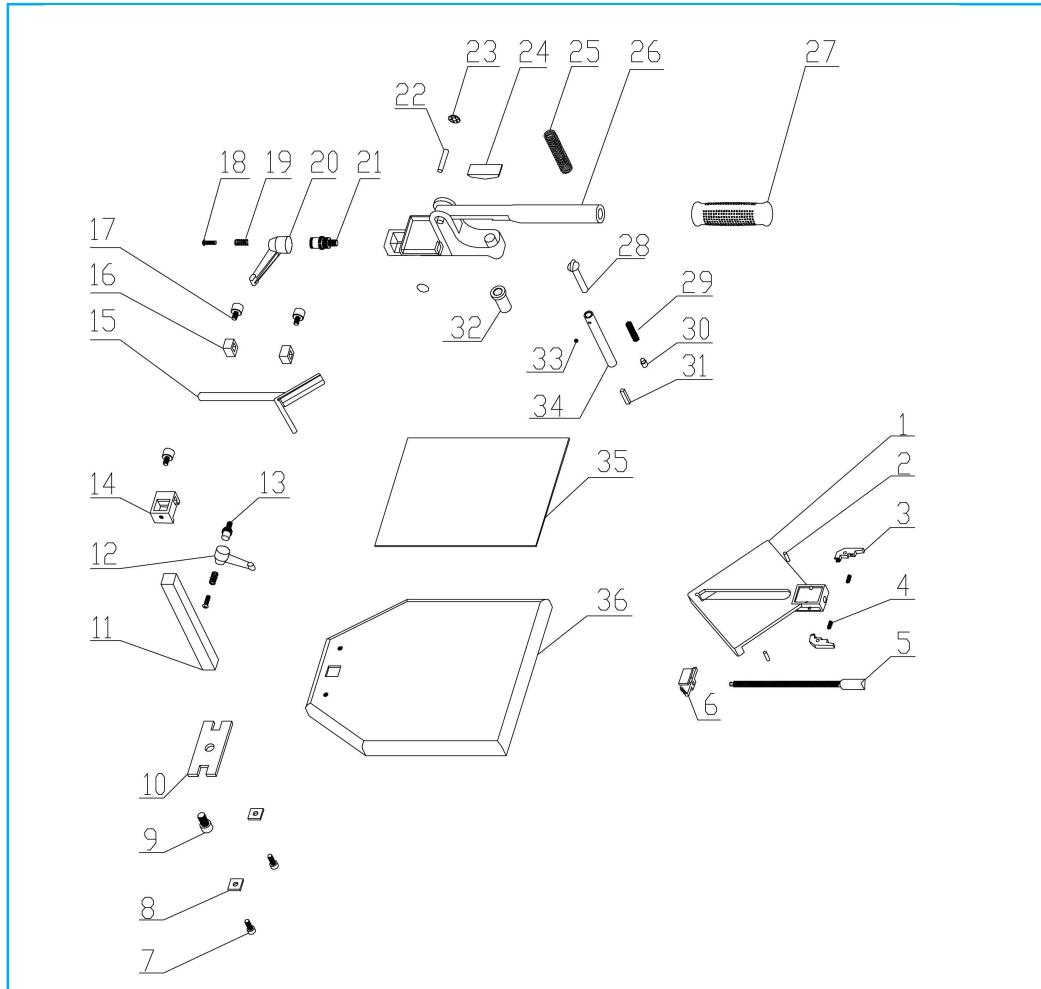
Use a wiper with a little oil to wipe all surfaces.

If the main spindle becomes stiff in the spindle bush then lubricate with a drop of fine oil.

Hardware

Your PFK04 comes with a free pack of hardware including rings, hooks, D rings, screws, screw eyes, glass plates, hard nails and wire.

A frame leveller is also included for making sure that the frame sits level on the wall.



Part No	Part Description	Part No	Part Description
1	Clamp	19	Spindle for Adjustable Lever
2	2 x Clamp Cover Pin	20	Adjustable lever
3	2 x Clamp Lever	21	Fitting screw for Adjustable Lever
4	2 x Lever Pin	22	Handle Pin
5	Clamp Screw	23	2 x Pin Caps
6	Clamp Jaw	24	Pressure Bar
7	2 x Locking Tab Screws	25	Spring
8	2 x Locking Tabs	26	Main bracket and handle
9	Main base screw	27	Plastic Handle
10	Locking Strap	28	Top Spindle
11	Vertical Pillar	29	Spring
12	Fence rise and fall Adjustable Lever	30	Plunger for internal spring
13	Spindle for Adjustable Lever	31	Magnetic Driver
14	Fence rise and fall bracket	32	Spindle bearing
15	Fence	33	Grub screw
16	2 x production stops	34	Lower Spindle
17	3 x Fence screws	35	Rubber mat
18	Screw for Adjustable Lever	36	Base